

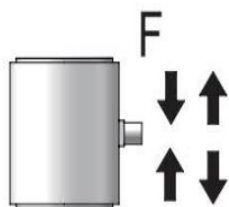
JUL-H180 拉压力传感器



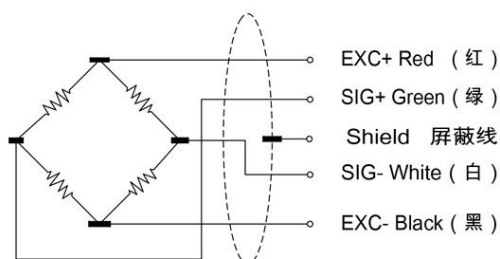
■特点与用途 Features&Applications

- ▶柱式设计, 便于安装
- ▶拉压双向测量, 形变小
- ▶采用高精度电阻应变原理, 动态响应频率高
- ▶主要用于适用于推拉力计、注塑模具行业、机械压装、各种工程测力设备及自动控制系统

■传感器受力图 Force diagram of sensor

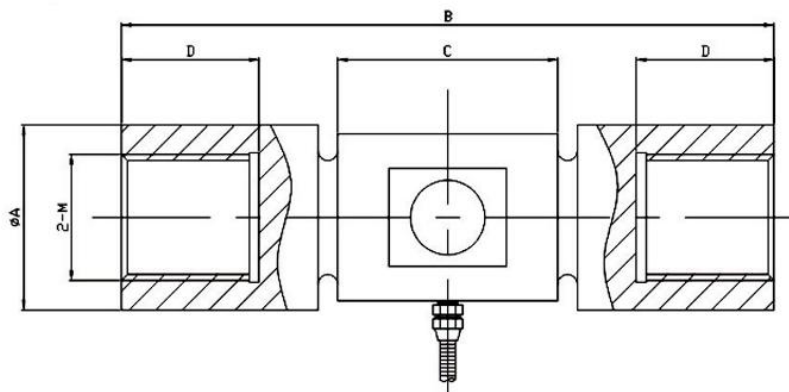


■传感器接线图 Sensor wiring diagram



技术参数 Technical specifications		
额定量程	Capacity	20t-100t (可选)
输出灵敏度	Rated output	1.5±0.2mV/V
零点输出	Zero balance	±0.02mV/V
非线性	Non-linearity	0.1%F.S
滞后	Hysteresis	0.1%F.S
重复性	Repeatability	0.1%F.S
输入电阻	Input impedance	400±20Ω
输出电阻	Output impedance	350±10Ω
绝缘电阻	Insulation	≥5000MΩ/100VDC
激励电压	Recommended excitation	5 ~ 15VDC
温度灵敏度漂移	Temp.effect.on output	0.1%F.S./10°C
零点温度漂移	Temp.effect.on zero	0.1%F.S./10°C
工作温度	Operation temp range	-20 ~ 80°C
安全超载	Safe overload	150%
极限超载	Ultimate overload	200%
防护等级	IP Class	IP65
电缆尺寸	Cable size	Φ5x3000mm
材质	Material	合金钢

外形尺寸 External Dimension



量程(T)	φA	B	C	2- M	D
20	60	180	64	M36*4	40
30	76	213	73	M45*4.5	45
50	94	332	112	M64*3	70
100	112	367	130	M76*3	80